



**CPDVR4GPS**

**CO-PILOT®**  




To register your 2 year warranty, please visit [www.copilotdashcams.com/warranty](http://www.copilotdashcams.com/warranty)

### **Unit Maintenance:**

- Avoid contact with water and other liquid as the unit is not waterproof
- Do not attempt to open the unit, doing so will void your warranty
- Clean with a soft damp cloth only, do not use any chemical cleaners

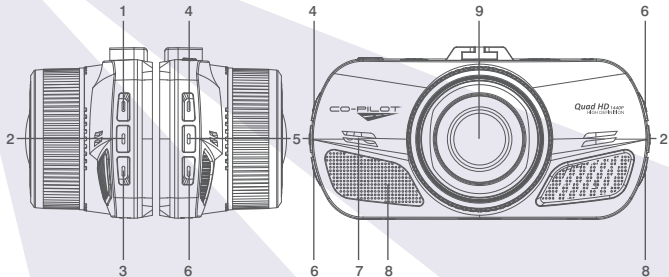
### **If the video is unclear or blurry:**

- Clean the lens with a soft damp cloth
- Check for dirt or marks on the window the camera is facing

### **Warnings:**

- Please dispose of this unit responsibly
- Keep away from fire
- Do not place so as to obstruct the Drivers view
- Do not place in any airbag deployment zones

## Unit Structure Chart <sup>1</sup>

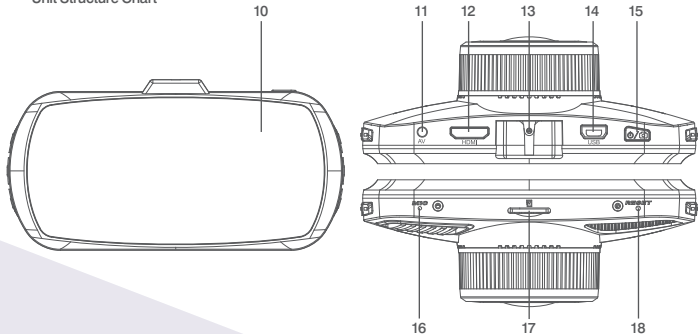


- 1 MODE Button
- 2 MENU Button
- 3 SOS Emergency

- 4 MODE Button
- 5 MENU Button
- 6 SOS Emergency

- 7 Speaker
- 8 Radiator Shutter
- 9 HD Camera

## Unit Structure Chart <sup>2</sup>



10 LCD

11 AV-OUT GPS

12 HDMI Interface

13 Holder Connector

14 USB interface

15 Power/Photo taking button

16 MIC

17 TF Slot

18 Reset

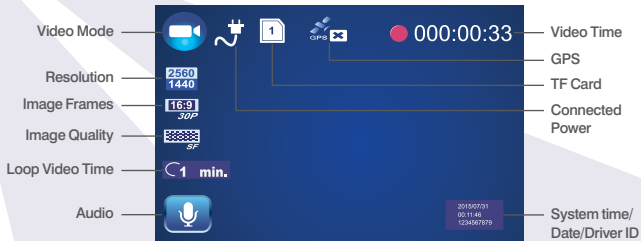
## Button & interface instructions <sup>1</sup>

Button Name	Button Function	Instructions
Power/ Photo Button	Power on/off Take photos	Short Press: Power on, red light turn off. Long Press: Power off, red light will turn off
Reset	Reset	Short Press: Restarts the unit when in standby mode
OK	Video start/stop/ photograph Menu selection	In video mode, start/stop recording Takes pictures in photograph mode Set/Confirm in menu mode
Up	Menu Navigation Turn audio recording on/off	In video mode turn off/off audio recording
SOS Emergency	Locks current recording file	
Mode	Switch Mode Take Screenshot	Press to switch between photo/record/playback In video mode, takes a screenshot

## Button & interface instructions <sup>2</sup>

Button Name	Button Function	Instructions
TF card Slot	TF card Slot	Insert the TF card into this Slot
HDMI Interface	High definition output	Connect the HD television by HDMI cable, in the video mode, view the video/photos; in the photograph mode, make photos, view video and photos.
AV or GPS Slot	AV Output or GPS Output	The AV slot can't be acted as AV output if the machine be set with GPS, only acted as GPS output. The AV slot can't be acted as GPS output if the machine be set without GPS, only acted as AV output.
Holder Interface	Install holder	Install the holder on the machine
USB Output	storage/charging	Connect USB cable for auto recording, and view the video/photo. Connect USB cable for auto charging
Menu	Photograph/record/ playback, all functions setting	In the video mode: short press once to switch video setting; In the photograph mode: short press once to switch photograph setting; In the video/photo playback mode: short press once to switch playback setting;

## Photograph/Video/Playback basic operation instruction <sup>1</sup>



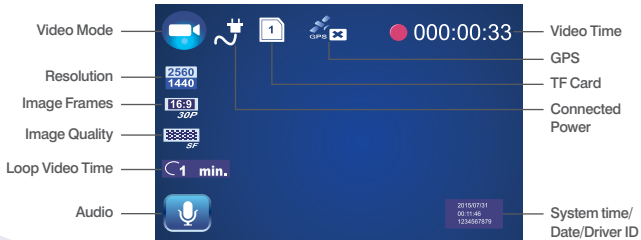
### Before installation, operate instructions by hand:

Power on/off by hand. Short press Power button, the red indication light will on. Enter the video mode, Long press Power button again, the red indication light will off.

**Attention:** the device will be turn off automatically after a warning of low battery when the power is very low. Charge by connecting the computer via USB data cable  
vehicle DVR mainly use while charging, the full built-in battery could maintain about 10 minutes for standby, if use for long time, must connect the power cable for charging; and use by connecting the mobile power at home.



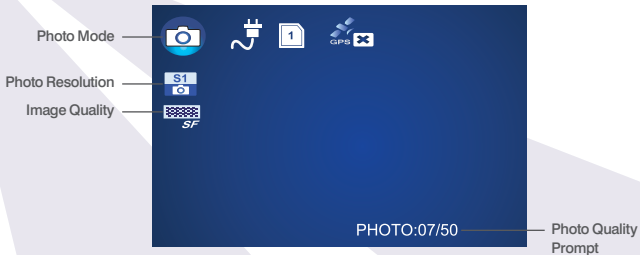
## Photograph/Video/Playback basic operation instruction <sup>2</sup>



**Video Mode:** Short press mode button to switch to video mode, there is a video recording icon shown on the top left corner of the LCD; short press OK button to start recording, the red video indication light start to flash, that is the DVR is under recording, short press OK button again to stop recording.

**Video process:** Power on > enter video mode > short press OK button to record > short press OK button again to stop recording.

## Photo Mode

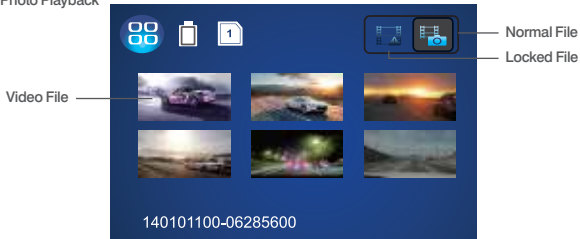


Short press MODE button to switch to photo mode, there is a photo shooting icon shown on the top left corner of the LCD, short press Power or Photo Taking button to take photos, when photography is finished, the LCD will be flash one time.

**Attention:** This machine is limited only for 50 pcs photos, and can't take photos when over 50 pcs.

**Photograph process:** Power on > enter video mode > press MODE button to switch the photograph mode > press Power or Photo Taking button to take photos.

## Video/Photo Playback



Short press MODE button twice to switch playback mode, the playback icon will be shown on the LCD top left corner:

1. Short press up/down button to selecting the file section (locked section/ regular file section);
2. Short press OK button to enter the playback section, then short press up/down button to selecting the file, press OK button again to enter single file playback (press OK button again to start playback the video)

**Attention:** If it's recording, first stop recording, then press MODE button twice to switch the playback mode

**Playback process:** Power on > enter playback mode > press MODE button twice to switch the playback mode > press up/down button to enter the section and press OK button to choose > press OK button to enter single file playback (press OK button again to start replay the video)

## Menu Setting Instructions <sup>1</sup>

### Operation:

1. Short press Up/Down button to switch the setting options.
2. Short press OK button to enter the setting, short press up/down button to modify the setting.
3. Short press OK button to confirm the modification, if no save the modification, just press menu button to exit.

**Language Setting:** English/ Simplified Chinese etc.

**System Format:** MTSC/PAL default is PAL

**Driver ID setting:** Set 1-9 9 positions

**Time setup:** Set year/month/date/time

**Stamp setting:** Three modes: date/time/vehicle driver no. the default is off

**Format:** Choose  or , choose  means format, choose  means no;

**Default setting:** Choose  or , choose  means reset, choose  means no;

**Auto Power off setting:** Four modes: off 1 minute/3 minutes/5 minutes

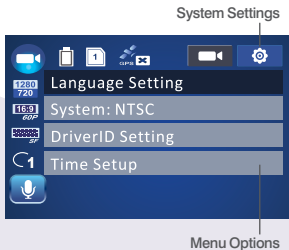
**Card volume:** Three modes: total capacity/usage/surplus

**Warning tone setting:** on/off, default is on

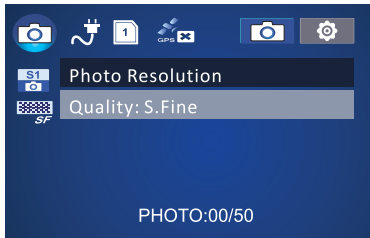
**Backlight Off setting:** Four modes: off/1 minute/3 minutes/5 minutes

Without any buttons press operation for unit during the setting time, the screen will off, but the unit is still working.

**Version info:** View the version information;



## Menu Setting Instructions <sup>2</sup>



### Photograph Settings:

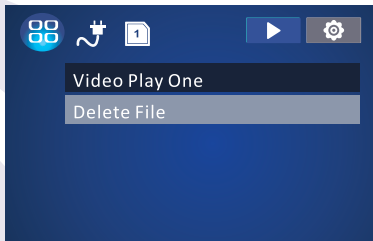
After power on, short press MODE button to switch the photograph mode, the photo icon will be shown on the LCD top left corner, press MENU button to enter the settings, there are 2 setting options: Photo resolution, Image quality; short press up/down button to switch the setting options, short press OK button to enter the setting, short press up/down button to modify the setting, and short press OK button to confirm the modification.

### Photo resolution:

Four modes: 4M(2688×1512 16:9)/8M(3264×2448 16:9)/14M(4384×3288 16:9)/16M(4608×3456 16:9)

**Image quality:** Three modes: superior/good/general

### Menu Setting Instructions <sup>3</sup>



#### **Playback setting**

After power on, short press MODE button twice to switch the playback setting, the photo icon will be shown on the LCD top left corner, press MENU button one time to enter setting, there are 2 setting options (Play mode setting, Delete the file); short press up/down button to switch the setting options, short press OK button to enter the setting, short press up/down button to modify the setting, and short press OK button to confirm the modification.

**Play mode setting:** Four modes: play single/ play all/ single loop/all loop the default is play single

**Delete file:** Two modes: delete the current file/delete all files the default is delete the current file

## Product Specifications <sup>1</sup>

Product Feature	HD Camera, HD Recording
G-sensor	Built-in(to save the file emergency, and cannot be deleted anymore if the collision of vehicles happen)
LCD Size	2.7 LTPS 16:9
Lens	170 Degree A+ HD ultra wide angle
Photo Pixel	1800W
Video Pixel	500W
Lens Aperture	F=1.8
Language	English/Simplified Chinese etc
Video Format	MOV.
Video Resolution	Seven modes: 2560x1440 30P 2304x1296 30P 1920*1080 30P 1920*1080 60P 1280*720 60P HDR 2560x1440 30P/HDR 1920*1080 30P
Video Codec.	H. 264
Color Effect	Standard
Loop Recording	Recording with seamless, no leakage
Auto turn on/off while vehicle power on/off	Support turn on while vehicle starts. And turn off while vehicle shutdowns.

## Product Specifications <sup>2</sup>

Product Feature	HD Camera, HD Recording
Motion Detection	Support
Year/Month/Day/Hour/Minute	Support
Photo Pixel	4M/8M/14M/16M
Photo Format	JPEG
Memory card	TF (Support Max 512GB)
MIC	Support
Built-in Speaker	Support
GPS	Support Optional(With GPS no AV, or With AV no GPS)
ADAS Function	LDWS, FCWS
USB Function	1: Storage 2: Charging
Power Interface	5V 1.5A/1+5-
Battery	Built in LI-ion Battery
Park Mode	Support
Normal operating temperature range	-30°to 80°





### **GPS player software Installation and Using Instruction(Only suitable for the units with GPS function)**

If need check the GPS information, the professional player must be installed firstly

Please install the file provided in the unit:

Please copy the file to computer and install.

#### **Using the player software:**

1. Please open and install it for the first use.
2. Click File – Open to choose the file which need play, and open the play mode directly, as above.

### **Quick install instruction:**

- Make sure the location is clean and dry before mounting the unit
- Connect to your 12v power socket via the cable connected to the USB socket on the unit
- You should see a blue light to indicate the unit is charging, once the unit is fully charged the light will turn off
- The unit will auto power on and off with the vehicles power socket
- For models with GPS, please connect the GPS module before the power

### **Troubleshooting:**

#### **Unit will not record:**

Please check that there is enough space on the SD card, and that is not locked or in read only mode.

#### **Unit stops recording frequently:**

For best performance, please make sure you are using a class 10 SD card that is SDHC compatible

#### **Unit shows “wrong file” during playback:**

The SD card may be corrupted or formatted incorrectly, please reformat before attempting to use again. This will cause the SD card to lose it's data.

CO-PILOT®

The logo consists of the text "CO-PILOT" in a bold, sans-serif font. Below the text is a stylized graphic of a road with dashed white lines receding into the distance, creating a sense of perspective. The entire logo is centered on the page.



**CPDVR4GPS**